

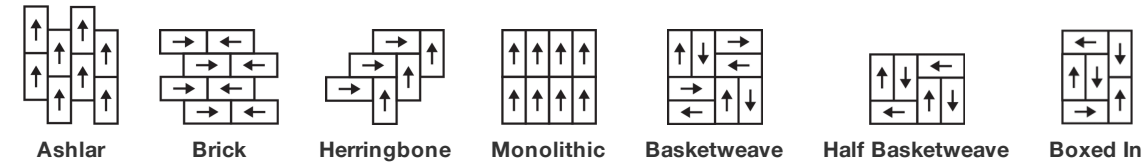
Jacquard Tile

Product Type	Carpet Tile
Collection	Suited
Style Number	5T280
Construction	Multi-Level Pattern/Cut Loop
Fiber	Ecosolution Q100™ Nylon
Dye Method	100% Solution Dyed
Primary Backing	Synthetic
Secondary Backing	Ecoworx® Tile
Recommended Adhesive	LokDots, 3000 Carpet Tile 1 Gallon, 4151 Multi-Use Carpet Tile 4 Gallon, 5000 Carpet Tile 1 Gallon, LokWorx Adhesive Tabs, 3800 Indoor Outdoor Carpet Tile 4 Gallon, 5000 Carpet Tile 4 Gallon or 3000 Carpet Tile 4 Gallon

	u.s.	metric
Product Size	18 in x 36 in	46 cm x 91 cm
Area Per Carton	45 ft²	4.18 m²
Pieces Per Carton	10 pcs	
Gauge	1/10 in	39.4 per 10 cm
Stitches	9.0 per in	36.5 per 10 cm
Average Density	6675 oz/yd³	0.247 g/cm³
Kilotex		8.59
Total Thickness	0.339 in	8.61 mm
Tufted Weight	28 oz/yd²	949.4 g/m²



Recommended Installation Method



Data + Testing

Nbs Smoke	Less Than 450
Electrostatic Propensity	Less Than 3.5 kv
Cri Green Label Plus (Glp)	USA GLP9968   China GLP1263
Pill Test	Pass*
Ada Compliance	>0.6, Meets the recommended static coefficient of friction for ADA walking surfaces and accessible routes***

Test Reports may be included or listed by the manufacturing/inventory style number as opposed to the noted selling style number.

Warranties

Lifetime Commercial Limited

Coordinating Products

Carpet Tile: **Textile Tile, Check Tile, Houndstooth Tile**  
Broadloom: **Textile**

Material Health & Environmental Certifications

Certifications Below Apply Exclusively To The Carpet Tile Rug Itself And Not The Lokworx Tabs Adhesive

Health & Wellbeing

Material Ingredient Transparency

**Cradle to Cradle Certified® | Silver Level (Version 4.0)**  
**Health Product Declaration (HPD) | 1,000 ppm Disclosure**  
**Living Building Challenge (LBC) | Free of Red List Chemicals**  
**Declare | LBC Compliant**  
**Declare | LBC Compliant**  
**NSF 140 | Gold**  
**CRI Green Label Plus (GLP) | GLP9968**

Indoor Air Quality

Climate Impact

Environmental Product Declaration (EPD)  
Embodied Carbon (Cradle to Gate)  
Life-Cycle Carbon Emissions  
Total Recycled Content  
Product Packaging

**3rd Party Certified in Accordance with ISO14044, ISO14025 & EN15804**  
**5.22 kg CO<sub>2</sub>/m<sup>2</sup>**  
**Carbon Neutral**  
**63% (Pre-Consumer 63% | Post-Consumer 0%)**  
**100% Recyclable**

Global Product Assessment

**Singapore Green Label | Certified**  
**CE Marking (EN 14041) | 3rd Party Certified**  
**Environmental Guarantee\* | Re[turn] Reclamation Program\* | Through Our Environmental Guarantee, Shaw Pledges to Transport And Recycle Any Ecoworx Carpet.**  
**Country of Origin\*\* | USA & China**

Green Leed Contribution Credit

MR Credit: Building Product Disclosure and Optimization  
Environmental Product Declarations - Option 1: Environmental Product Declaration (EPD)

**3rd Party Certified in Accordance with ISO14044, ISO14025 & EN15804**

MR Credit: Building Product Disclosure and Optimization  
Material Ingredients - Option 1: Material Ingredient Reporting

**C2C Silver Level (Version 4.0) or HPD (Version 2.1)**

MR Credit: Building Product Disclosure and Optimization  
Material Ingredients - Option 2: Material Ingredient Optimization

**C2C Silver Level (Version 4.0)**

MR Credit: Building Product Disclosure and Optimization  
Sourcing of Raw Materials - Option 2: Leadership Extraction Practices

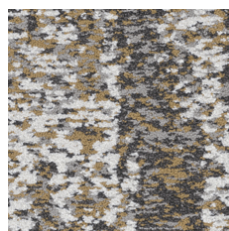
**Environmental Guarantee: Re[turn] Reclamation Program\* | Through Our Environmental Guarantee, Shaw Pledges to Transport And Recycle Any Ecoworx Carpet.**  
**Green Label Plus Certification: GLP9968**

EQ Credit: Low Emitting Materials  
Option 1: Product Category Calculations

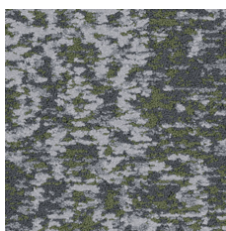
**Ecoworx Tile with Lokdots Installation System**

MR Credit: Interiors Life-Cycle Impact Reduction  
Option 3: Design for Flexibility

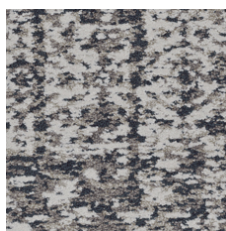
## Available Colorways



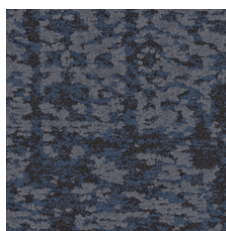
Saffron 79210  
LRV 20.9



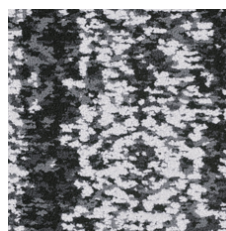
Bamboo 79375  
LRV 10.9



Denim 79485  
LRV 11.9



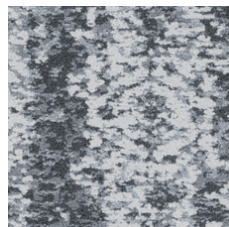
Indigo 79496  
LRV 2.7



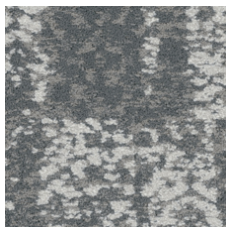
Merino 79500  
LRV 14.2



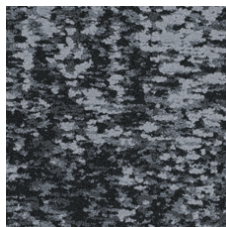
Patent 79505  
LRV 2.7



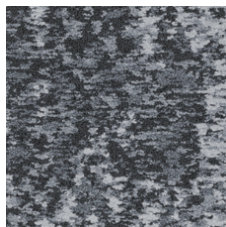
Cotton 79515  
LRV 19.3



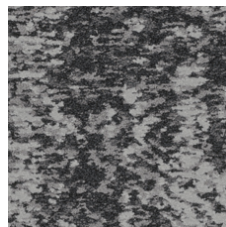
Muslin 79516  
LRV 18.3



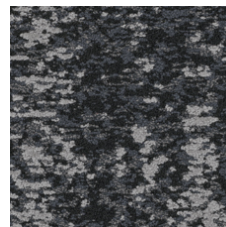
Mohair 79530  
LRV 6.7



Wool 79535  
LRV 11



Flax 79557  
LRV 10.8



Angora 79596  
LRV 5.1

## Additional Information

\* To learn more about the recyclability of our products and our re[TURN], please visit [shawcontract.com/sustainability](https://shawcontract.com/sustainability).

\*\*Meets or exceeds all local and national regulations in country of manufacture.

\*\*\*This carpet is manufactured to be ADA compliant, but to be fully ADA compliant, the end-user must ensure the carpet is adhered to the floor and installed as outlined in the ADA standards.

[Installation Guidelines](#)

[Maintenance Guidelines](#)

Specifications are subject to nominal manufacturing variance. Material supply and/or manufacturing processes may necessitate changes without notice.

This product is an exclusive design and may not be duplicated in any manner. Use of this design in the creation of another product design is also strictly prohibited.

Visit [shawcontract.com/testing](https://shawcontract.com/testing) for more information.



**PVC-Free**

Corporate Headquarters +1 800 257 7429 | +1 706 532 7984 | Atlanta +1 404 853 7429 | Bengaluru +91 80 6773 0202 | Beijing +86 10 6568 588 | Chicago +1 312 467 1331 | Dubai +971 4 584 6956 | Hong Kong +852 2623 0371 | Latin America (Miami) +1 305 827 5912 | London +44 207 961 4120 | Los Angeles +1 800 233 1614 | Melbourne +61 3 9939 8543 | Mexico City +55 5010 7600 | Mumbai +91 22 6284 5050 | Nantong +86 400 800 7429 | New York +1 212 953 7429 | Paris +33 (0) 1 81 22 44 39 | San Francisco +1 415 955 1920 | Santiago +562 2431 5000 x 550 | São Paulo +55 11 3071 1702 | Shanghai +86 21 3338 4000 | Singapore +65 6733 1811 | Sydney +1 800 556 302